

Single point load cell specially designed for the weighing of platforms and bunkers.

- Designed for off-center load
- Maximum platform size : 800 x 800 cm
- Material : Anodized aluminium alloy
- Protection: IP 64
- Easy to install
- Complies with OIML/R60 up to 3000d for scales in class III according to EN 45 501
- Available options (non exhaustive list):
 - o ATEX Ex ia IIC T6 to T4 certified (hazardous area)
 - o Protection cover (option F)
 - o Reinforced protection against corrosion



Model 2022/Model 2022-F

The SENSY's load cell 2022 is perfectly designed to the following applications :

- Industrial scales and platforms
- Retail and computing scales...
- Medium hoppers size weighing
- Filling, packaging and batching applications

CAPACITIES :

2022 : 100 - 150 - (200) - 300 - 500 kg
Cover " F " in option

TECHNICAL DATA							
Accuracy class		0.1 1000 d	C 1 1000 d OIML	0.05 2000 d	C 2 2000 d OIML	0.03 3000 d	C 3 3000 d OIML
Linearity error	% F.S.	< ± 0.1	< ± 0.03	< ± 0.05	< ± 0.025	< ± 0.025	< ± 0.020
Hysteresis error	% F.S.	< ± 0.1	< ± 0.03	< ± 0.05	< ± 0.025	< ± 0.025	< ± 0.020
Non - repeatability	% F.S.	< ± 0.03	< ± 0.02	< ± 0.02	< ± 0.01	< ± 0.015	< ± 0.01
Creep error over 30 min.	% F.S.	< ± 0.06	< ± 0.04	< ± 0.04	< ± 0.03	< ± 0.025	< ± 0.020
Zero shift after loading	% F.S.	< ± 0.015	< ± 0.01	< ± 0.01	< ± 0.0075	< ± 0.0075	< ± 0.005
Reference temperature	°C	23					
Nominal temperature range	°C	- 10...+ 45					
Service temperature range	°C	- 30...+ 70					
Storage temperature range	°C	- 50...+ 85					
Temperature coefficient of the sensitivity	% /10°C	< ± 0.05	< ± 0.02	< ± 0.035	< ± 0.015	< ± 0.015	< ± 0.009
Temperature coefficient of zero signal	% F.S./10°C	< ± 0.035	< ± 0.03	< ± 0.03	< ± 0.02	< ± 0.023	< ± 0.013
Nominal sensitivity	mV/V	±2					
Zero balance	mV/V	± 0.02					
Sensitivity tolerance (g=9,8107 m/s²)	%	< ± 0.3				< ± 0.1	
Input / Output resistance	Ohm	351 ± 2					
Insulation resistance (50V)	MOhm	> 5000					
Nominal excitation voltage	V	5 to 10					
Nominal range of the excitation voltage	V	2...15					
Safe load limit	% F.S.	150					
Breaking load	% F.S.	> 300					
Static lateral force limit	% F.S.	100					
Permissible dynamic loading	% F.S.	60					

F.S.: full scale Specifications subject to change without notice

LOAD CELL

model 2022

aluminium alloy

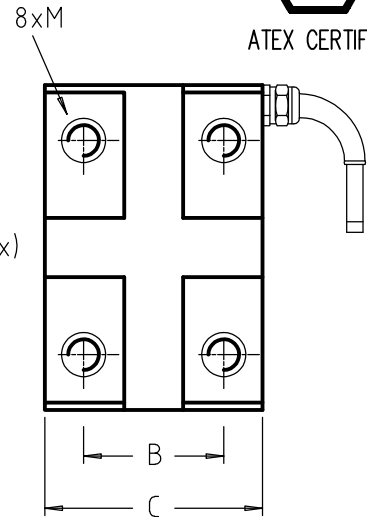
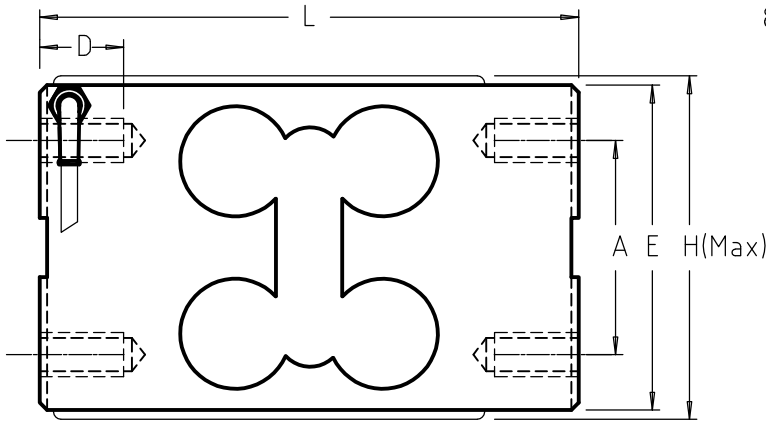
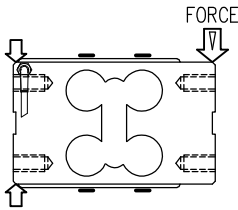
OFF-CENTER

Range 100–500 kg IP64

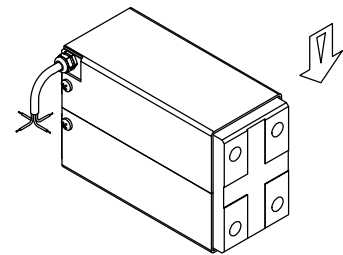
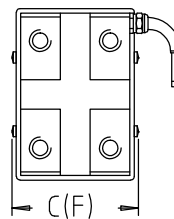
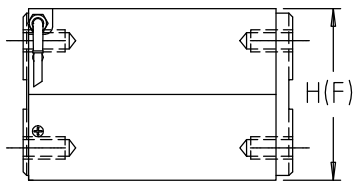
Cable length : 3 m



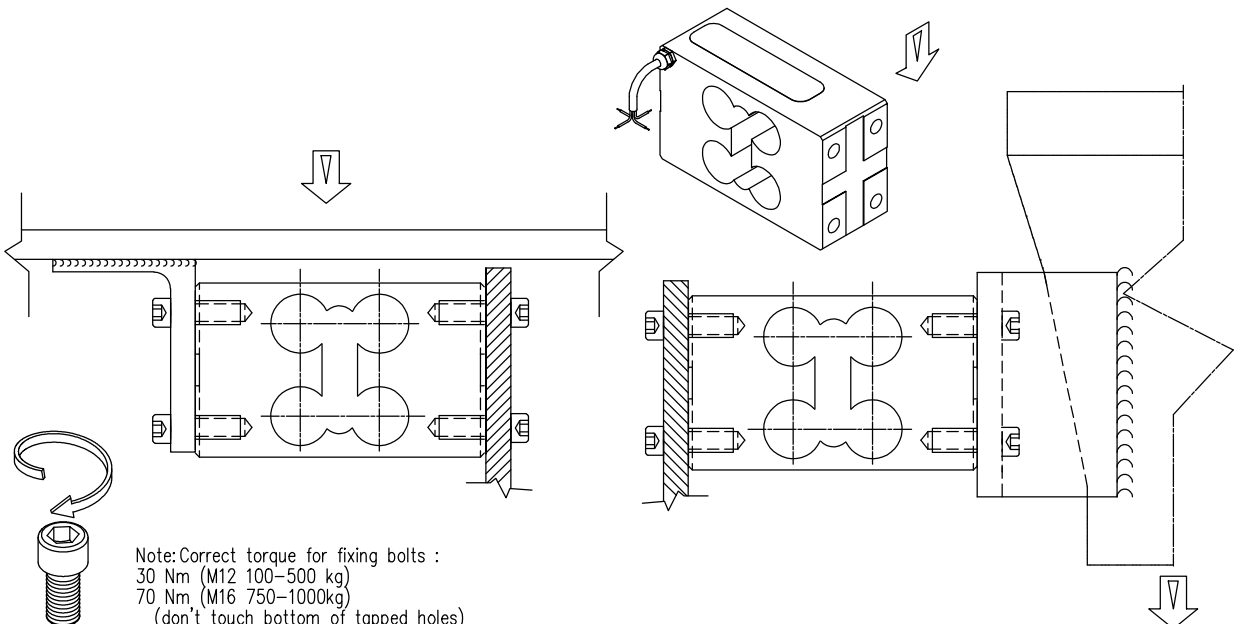
ATEX CERTIFIED



2022-F = COVER OPTION



CAPACITIES	A	B	C (F)	D	E	H (F)	L	M	MAX OFF-CENTER	Max.deflexion	Weight
100 – 500 kg	58	38	58 (69)	25	88	90 (96)	146	12	800x800	0.6 to 1 mm	1.5 kg



Note: Correct torque for fixing bolts :
 30 Nm (M12 100–500 kg)
 70 Nm (M16 750–1000kg)
 (don't touch bottom of tapped holes)