

Tension force transducer.

- Capacities up to 500 kN
- Sturdy design
- Material: Nickel plated steel (also available in stainless steel)
- Protection IP 66
- Most important available options:
 - o ATEX Ex ia IIC T6 to T4 certified (hazardous area)
 - o Amplified output signal (0..10 V, 4..20 mA)
 - o Digital output signal (RS-232C, RS-485, USB, ...)



Model 5205 - 10 t

The SENSY's load cell 5205 is perfectly designed to the following applications :

- Tension force measurement
- Suspended industrial weighing

CAPACITIES :

5205 : 20 - 50 - 100 - 200 - 300 - 500 kN

TECHNICAL DATA		
Accuracy class		SL
Linearity error	% F.S.	< ± 0.5
Hysteresis error	% F.S.	< ± 0.5
Non - repeatability	% F.S.	< ± 0.25
Creep error over 30 min.	% F.S.	< ± 0.2
Zero shift after loading	% F.S.	< ± 0,05
Reference temperature	°C	23
Nominal temperature range	°C	- 10...+ 45
Service temperature range	°C	- 30...+ 70
Storage temperature range	°C	- 50...+ 85
Temperature coefficient of the sensitivity	%/10°C	< ± 0.1
Temperature coefficient of zero signal	% F.S./10°C	< ± 0.1
Nominal sensitivity	mV/V	1,5
Zero balance	mV/V	± 0.02
Sensitivity tolerance (g=9,8107 m/s²)	%	< ± 0.5
Input / Output resistance	Ohm	350 ± 20
Insulation resistance (50V)	MOhm	> 5000
Nominal excitation voltage	V	5 to 10
Nominal range of the excitation voltage	V	2...15
Safe load limit	% F.S.	150
Breaking load	% F.S.	> 300
Static lateral force limit	% F.S.	10
Permissible dynamic loading	% F.S.	70

F.S.: full scale Specifications subject to change without notice

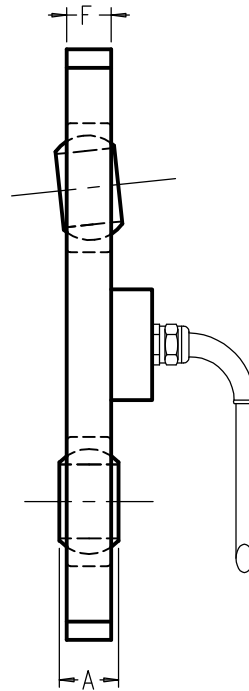
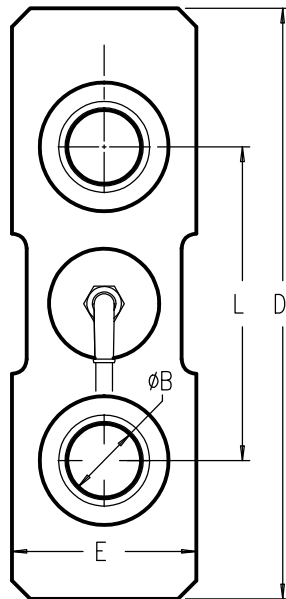
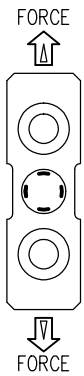
LOAD CELL

model 5205 alloy steel

TENSION LOAD CELL

Range 20 - 500 kN IP 66
(2 - 50t.)

Cable length : See table (CL)
Sensitivity ± 1.5 mV/V



CAPACITIES	A	$\varnothing B$	L	D	E	F	Dynamic use	CL	Weight
20 kN	14	17	120	180	± 50	10	15 kN	3 m.	0.7 kg
50 kN	16	20	130	200	± 70	12	30 kN		1.2 kg
100 kN	20	25	190	280	± 80	16	50 kN	6 m.	2.8 kg
200 kN	25	35	285	395	± 100	20	100 kN		5.8 kg
300 kN	32	45	310	450	± 120	25	150 kN		9.5 kg
500 kN	44	60	320	500	± 180	40	250 kN		25 kg

Other dimensions on request

