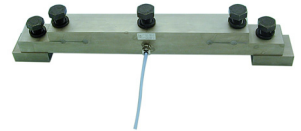


2625-2645

ON BOARD WEIGHING LOAD CELLS

Load cells specially designed for on board weighing on trucks.

- Very sturdy design
- High resistance against shocks
- Protection IP 67
- Low cost solution
- Easy to install (no stabilization system needed)
- Screws and blocks to be welded available
- Option: ATEX Ex ia IIC T6 to T4 certified (hazardous area)



Model 2625 + accessories

The SENSY's load cells 2625 and 2645 are perfectly designed to the following applications :

- "On board" weighing system on trucks, lorries or agrarian trailer.
- "On board" overload preventing system.
- Force measurement where the load has to be hold with stiffness (ex.: Weighing of rail ways).

CAPACITIES :

2625 : 10 - 50 - 100 t
2645 : 10 t

TECHNICAL DATA		
Accuracy class		SN
Linearity error	% F.S.	< ± 0.25
Non - repeatability	% F.S.	< ± 0.1
Creep error over 30 min.	% F.S.	< ± 0.1
Zero shift after loading	% F.S.	< ± 0.025
Reference temperature	°C	23
Nominal temperature range	°C	- 10...+ 45
Service temperature range	°C	- 30...+ 70
Storage temperature range	°C	- 50...+ 85
Temperature coefficient of the sensitivity	% /10°C	< ± 0.05
Temperature coefficient of zero signal	% F.S./10°C	< ± 0.035
Nominal sensitivity	mV/V	0,441
Zero balance	mV/V	± 0.02
Sensitivity tolerance (g=9,8107 m/s ²)	%	< ± 0.3
Input / Output resistance	Ohm	350 ± 20
Insulation resistance (50V)	MOhm	> 5000
Nominal excitation voltage	V	5 to 10
Nominal excitation voltage	V	2...15
Safe load limit	% F.S.	100
Breaking load	% F.S.	250
Permissible dynamic loading	% F.S.	50

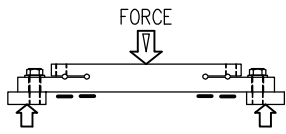
F.S.: full scale Specifications subject to change without notice

LOAD CELL

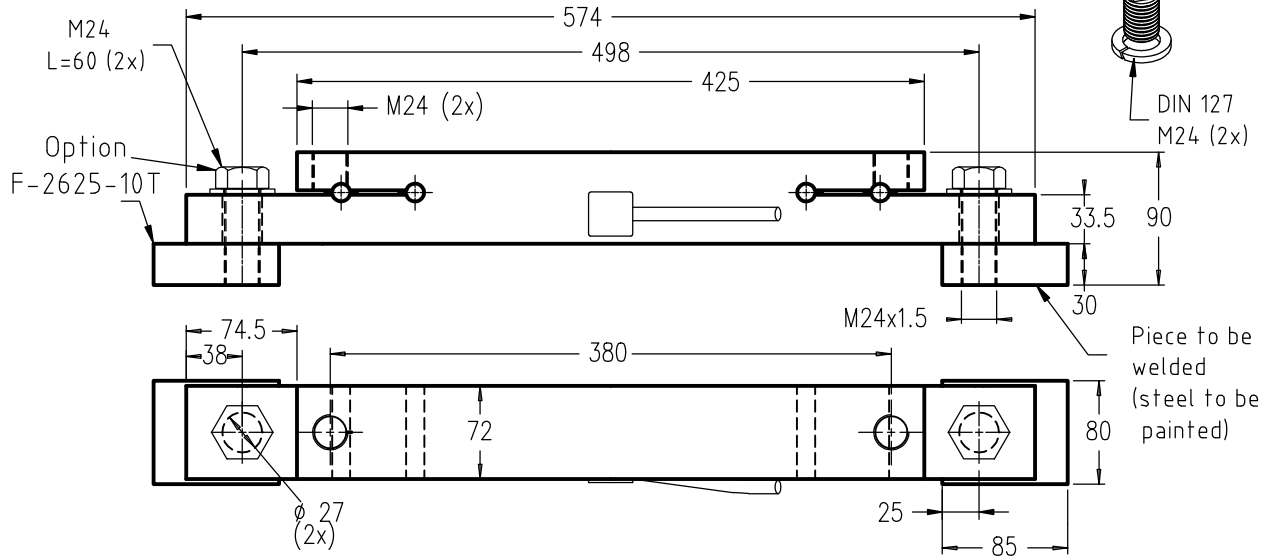
model 2625 nicked steel body
COMPRESSION



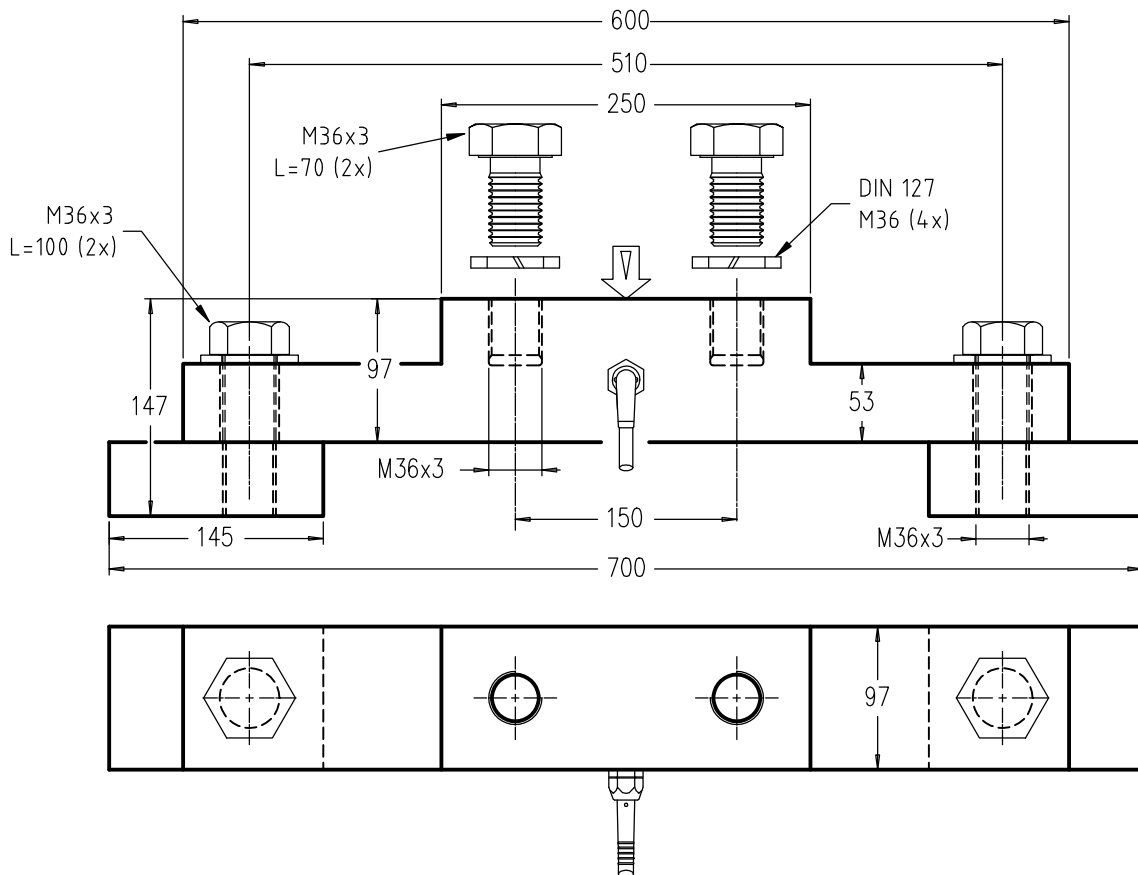
ATEX CERTIFIED



Static range 10t.(0.88 mV/V) Cable length : 10 m
Dynamic range 5t. (0.44 mV/V) Weight : 19 kg IP 67



Static range 50t.(1 mV/V) Cable length : 10 m
Dynamic range 30t.(0.5 mV/V) Weight : 33 kg IP 67



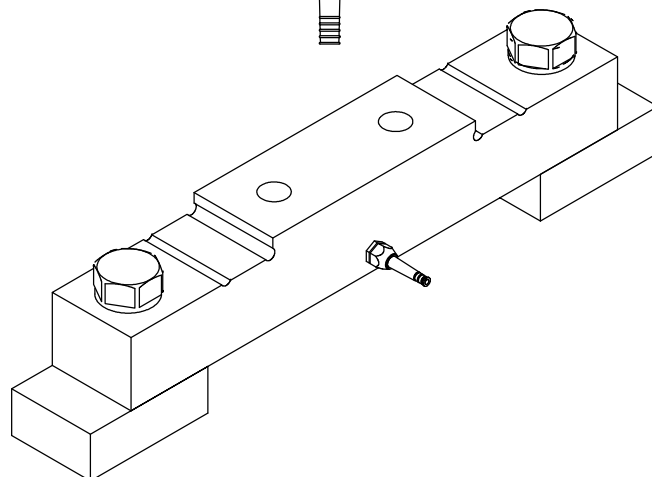
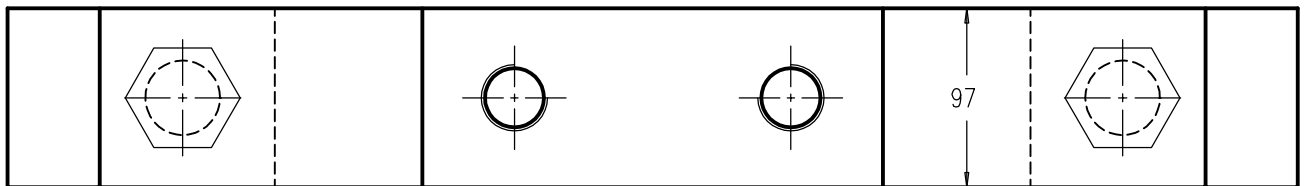
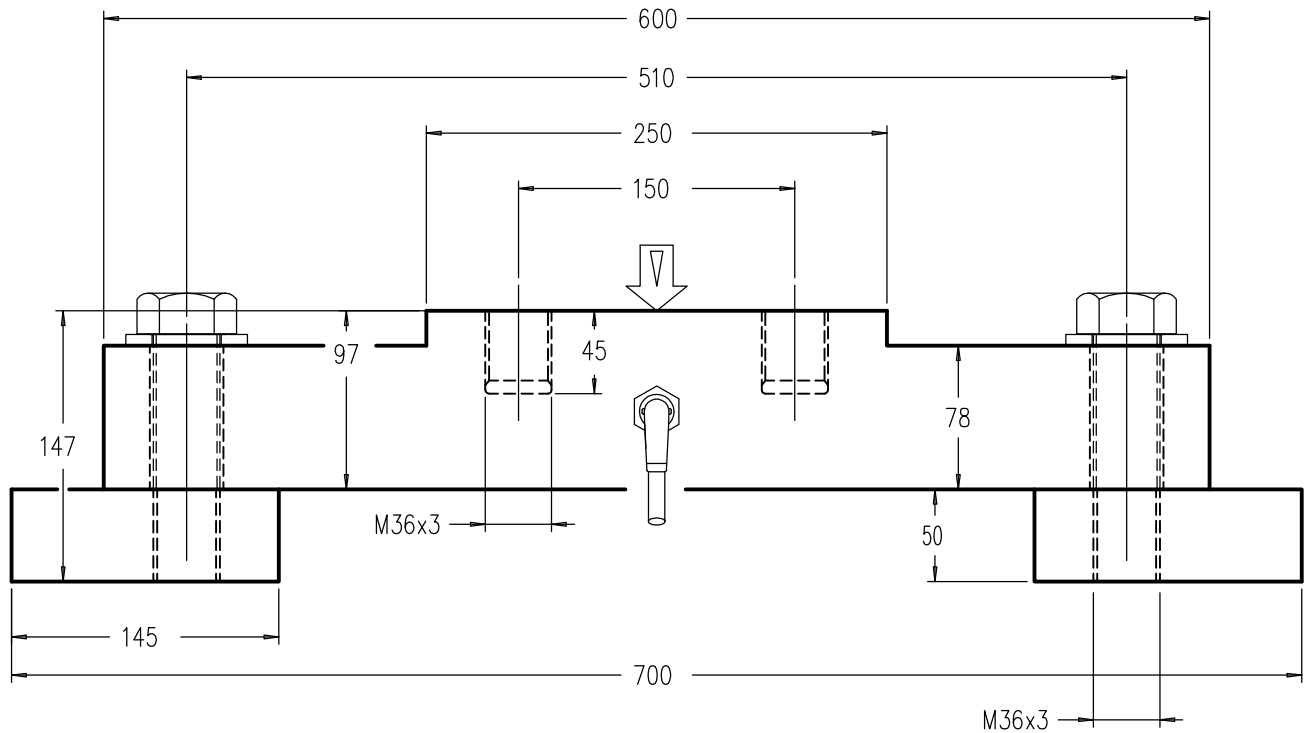


www.sensy.com

LOAD CELL

model 2625 alloy steel
COMPRESSION

Range 100t. 1mV/V Cable length: 10 m IP67



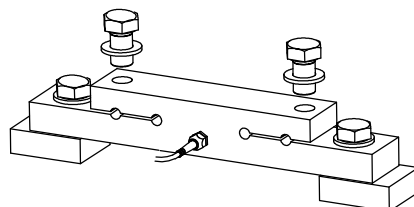
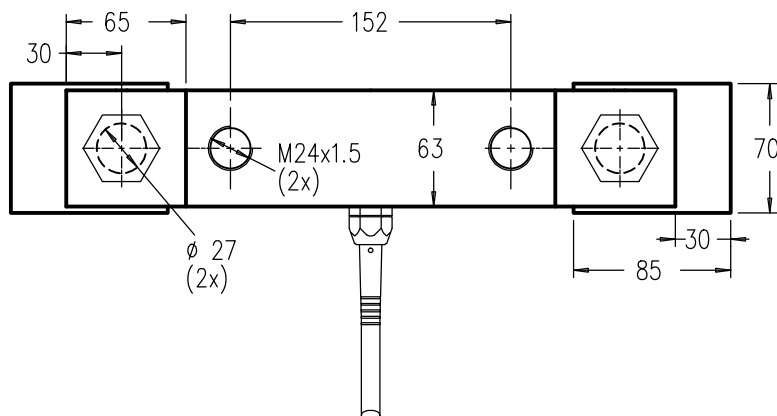
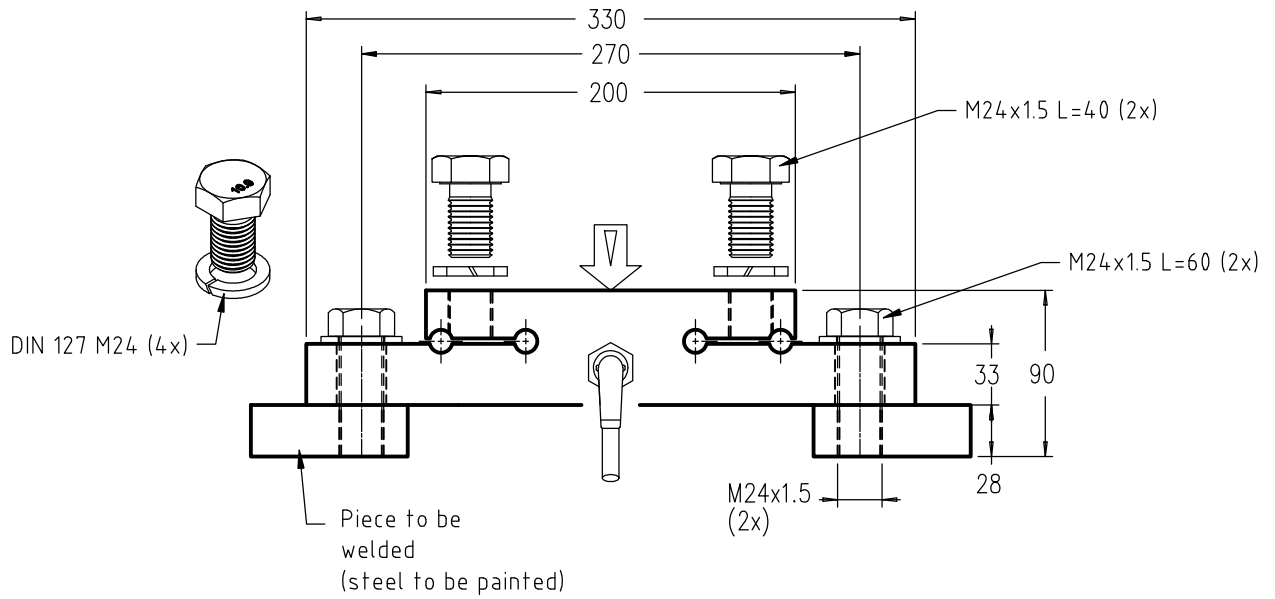
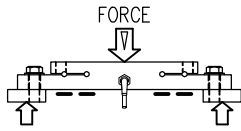
LOAD CELL

model 2645 nickered steel body
COMPRESSION

Range Static 10t. Cable length:10 m IP67
 Dynamic 5t. Weight : 11.5 kg



ATEX CERTIFIED





ON BOARD WEIGHING

