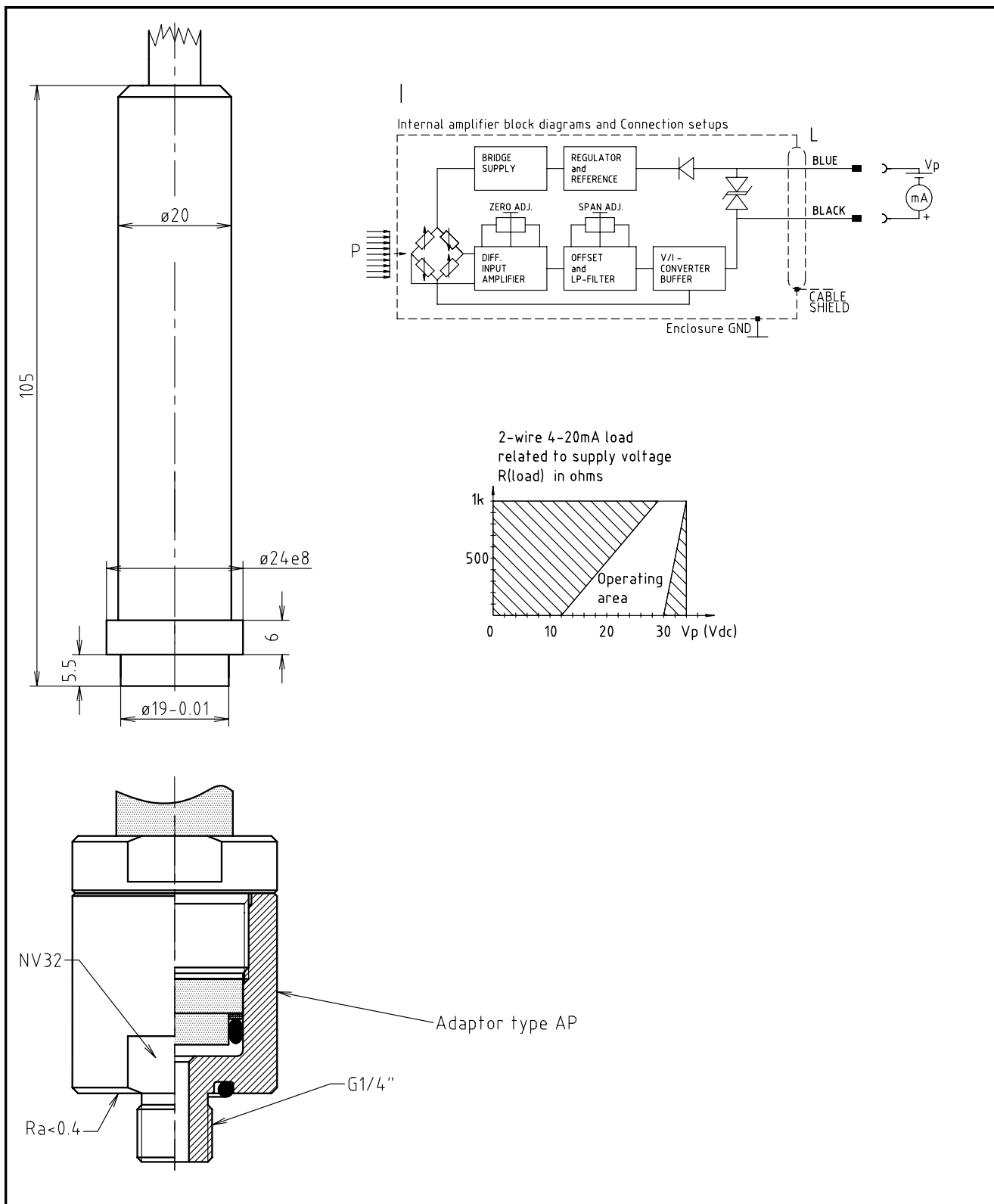


ABSOLUTE PRESSURE TRANSMITTER PSA



DESCRIPTION

The pressure transmitter is based on a piezo-resistive silicon sensor. The stainless steel part is laserwelded to the stainless steel tube which contains the amplifier. The backside of the sensor is referenced to vacuum. The cable shield is connected to the stainless steel housing. All transmitters are helium tested for leak.

SPECIFICATIONS

Pressure range	0.7, 1, 2, 5, 10, 20 or 35 bar absolute
Pressure limits	1.5 times rated pressure
Material	Stainless steel AISI 316L
Supply voltage	12-30 V
Supply voltage effect	< 0.03 %/V
Output signal	4-20 mA 2-wire (R_L see diagram)
Response time	6 ms
Temperature range - operating - compensated	-10 °C to +85 °C 0 °C to +50 °C
Temperature coefficient of zeropoint and sensitivity	< ± 2 % FSO (0 °C to +50 °C with reference to +25 °C)
Non-linearity	< ± 0.25 % (typical < ± 0.1 %)
Repeatability	< ± 0.05 %
Long term stability- offset	< ± 0.2 % 1 year (typical < ± 0.1 %)
Long term stability- sensitivity	< ± 0.2 % 1 year (typical < ± 0.1 %)
Transducer weight	100 grams
Cable	Outer insulation: $\varnothing 9$ mm black PUR. Wires: 5×0.5 mm ² PVC insulated wires + 2 supporting wires. Weight: 70 g/m.
Protection class	IP67
Pressure connections	With adaptor type AP (see datasheet 1.8.2)

ORDERING INFORMATION

