

5575

RUNNING LINE TENSIONMETER

Load cell specially designed to measure the tension force applied to a running cable or a running rope.

- Wide range of cables (Ø from 6 up to 50 mm)
- Protection : IP65
- Material :
 - o Load pin : stainless steel
 - o Other : nickel plated steel
- Complete range of electronics, load limitation devices and displays CE certified
- Custom made manufacturing
- Available options (non exhaustive list) :
 - o ATEX Ex ia IIC T6 to T4 certified (hazardous area)
 - o Protection IP67
 - o Amplified output signal (4..20 mA or 1..5 V)



Model 5575

The SENSY 5575 is perfectly designed for the following applications:

- Tension measurement of towage and haulage cable
- Force measurement of winches
- Load limitation of hoisting devices, cranes and overhead cranes (in combination with load limitation devices (CRANEBOY, BRIDGEBOY, ...))

CAPACITIES :

5575 : from 0,4 to 40 t

TECHNICAL DATA		
Combined error (non-linearity + hysteresis)	% F.S.	< ± 5
Reference temperature	°C	23
Nominal temperature range	°C	- 10...+ 45
Service temperature range	°C	- 30...+ 70
Storage temperature range	°C	- 50...+ 85
Temperature coefficient of the sensitivity	%/10°C	< ± 0.1
Temperature coefficient of zero signal	% F.S./10°C	< ± 0.1
Nominal sensitivity	mV/V	1
Input / Output resistance	Ohm	350 ± 20
Insulation resistance (50V)	MOhm	> 5000
Nominal excitation voltage	V	10
Nominal range of the excitation voltage	V	2...12
Safe load limit	% F.S.	200
Breaking load	% F.S.	> 500

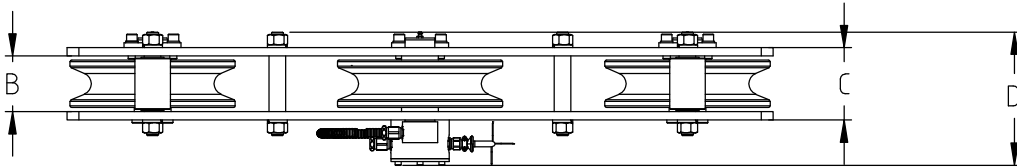
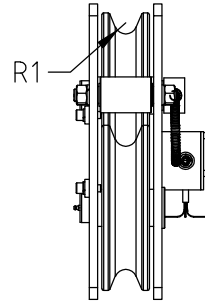
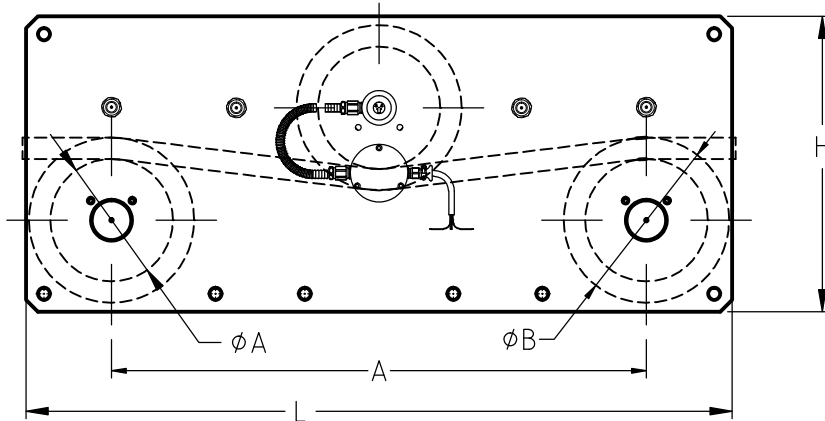
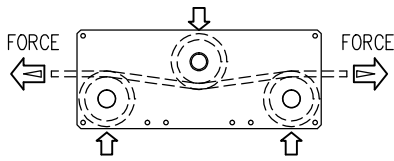
F.S.: full scale Specifications subject to change without notice

RUNNING LINE TENSIOMETER

model 5575 alloy steel

FOR CABLE $\varnothing 8$ to 36 mm

Range 0.4-40t IP 67



Other sizes and capacities on request
Some examples:

CAPACITIES	\varnothing CABLE	\varnothing A	\varnothing B	R1	A	B	C	D	H	L	Max. Speed	Weight (kg)
400 kg	8	48	90	8.5	500	34	50	110	117	630	1 m/s	± 9
1.5 t	12	48	90	8.5	500	34	50	110	140	630	1 m/s	± 10.6
6 t	16	119	151	9	500	34	50	110	140	661	6 m/s	± 38
20 t	Min 28 - Max 32	120	184	17	900	63	79	159	341	1210	80 m/mn	± 51
40 t	36	206	278	19	900	94	122	224	497	1188	10 m/mn	± 224

Configurator on www.runninglinetensiometer.com

